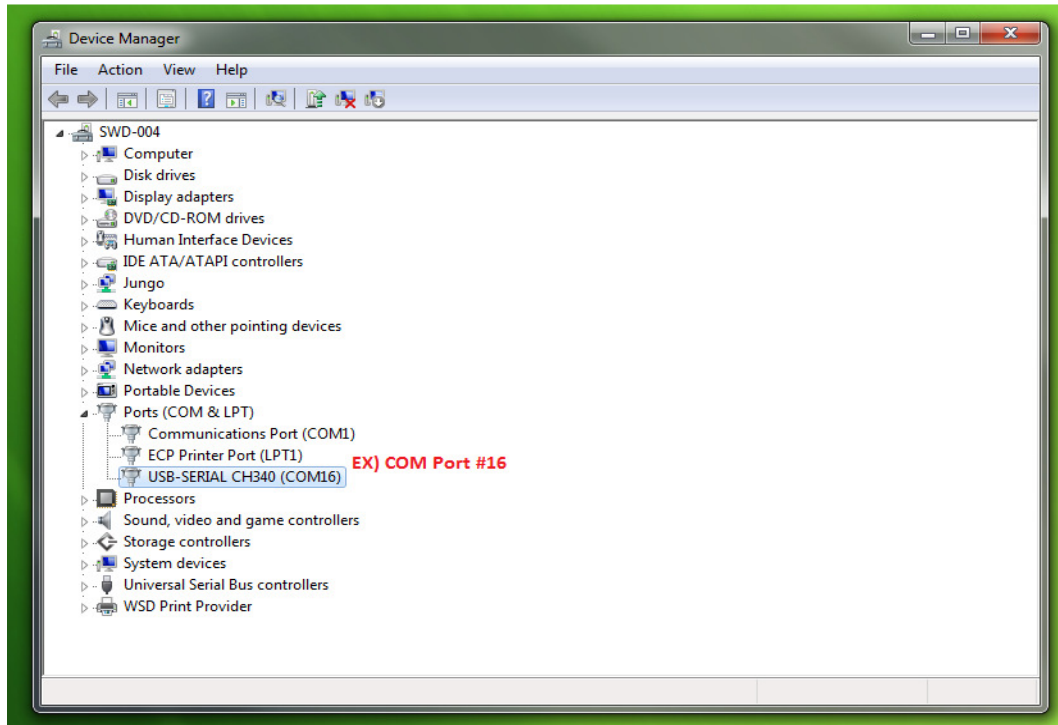


SuperSonar-I Quickstart Guide

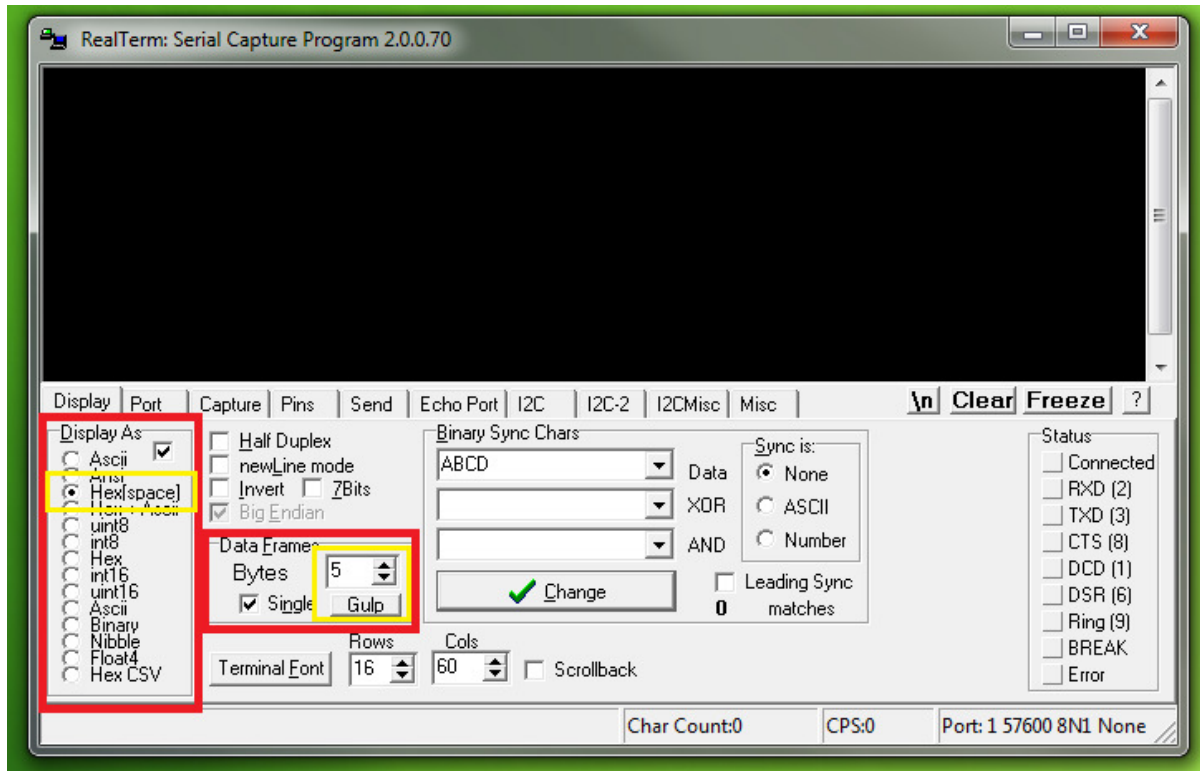


1. Download and install “Realtterm” or similar serial terminal software.
<http://sourceforge.net/projects/realtterm/files/latest/download?source=files>
2. Connect Sonar module to an open USB port and wait for the drivers to successfully install. Once the drivers are successfully installed, open the device manager through control panel, select the drop-down menu for the “Ports” tab, and verify the COM port for the USB-SERIAL interface.

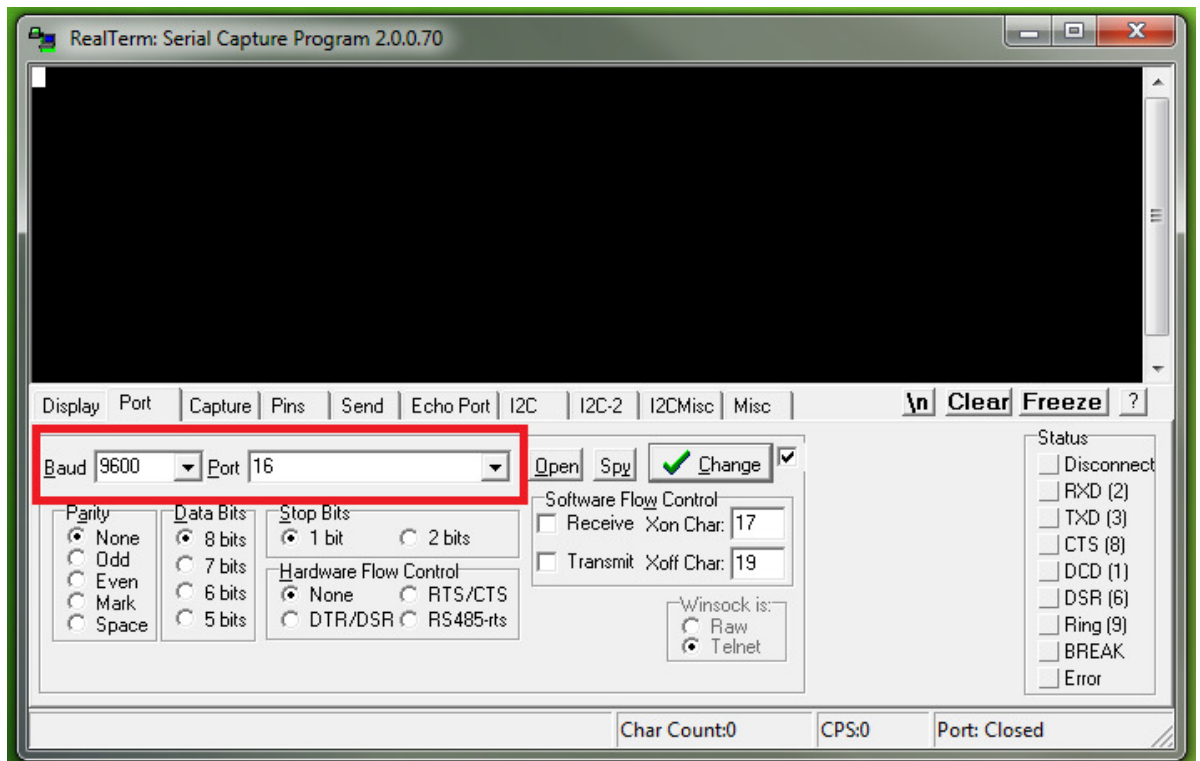


3. Once you have verified the COM port, open Realtterm and under the main “Display” Tab select “Hex[space]” as the preferred display format. Then still in the display tab,

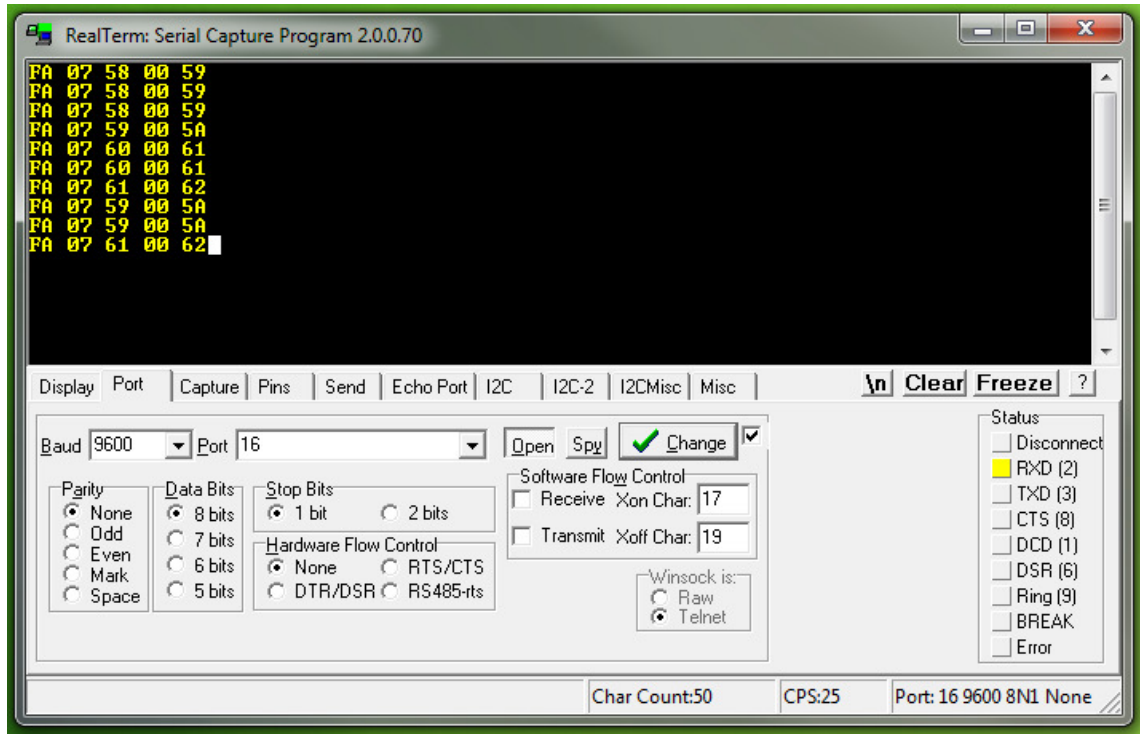
change the Data Frames to “Bytes 5”, and **CHECK THE BOX FOR “Single”**.



4. Navigate to the “Port” tab, change the Baud rate to 9600, and configure the port number to what you found in step 2. Select “Open” to initiate the SuperSonic module.



5. SuperSonar will begin to auto-ping and Realterm will continuously display data. To send SuperSonar a command for a different routine navigate to the “Send” tab.



6. To send the SuperSonar module a single ping command enter “0xF5, 0x01, 0x00, 0x76” and click “Send Numbers”. The SuperSonar Module should return a single ping only, and will no longer be in automatic ping mode. This command can be sent multiple times for multiple single pings.

*Refer to the SuperSonar protocol document for a complete list of commands

**Note that all checksums are ANDed by7F